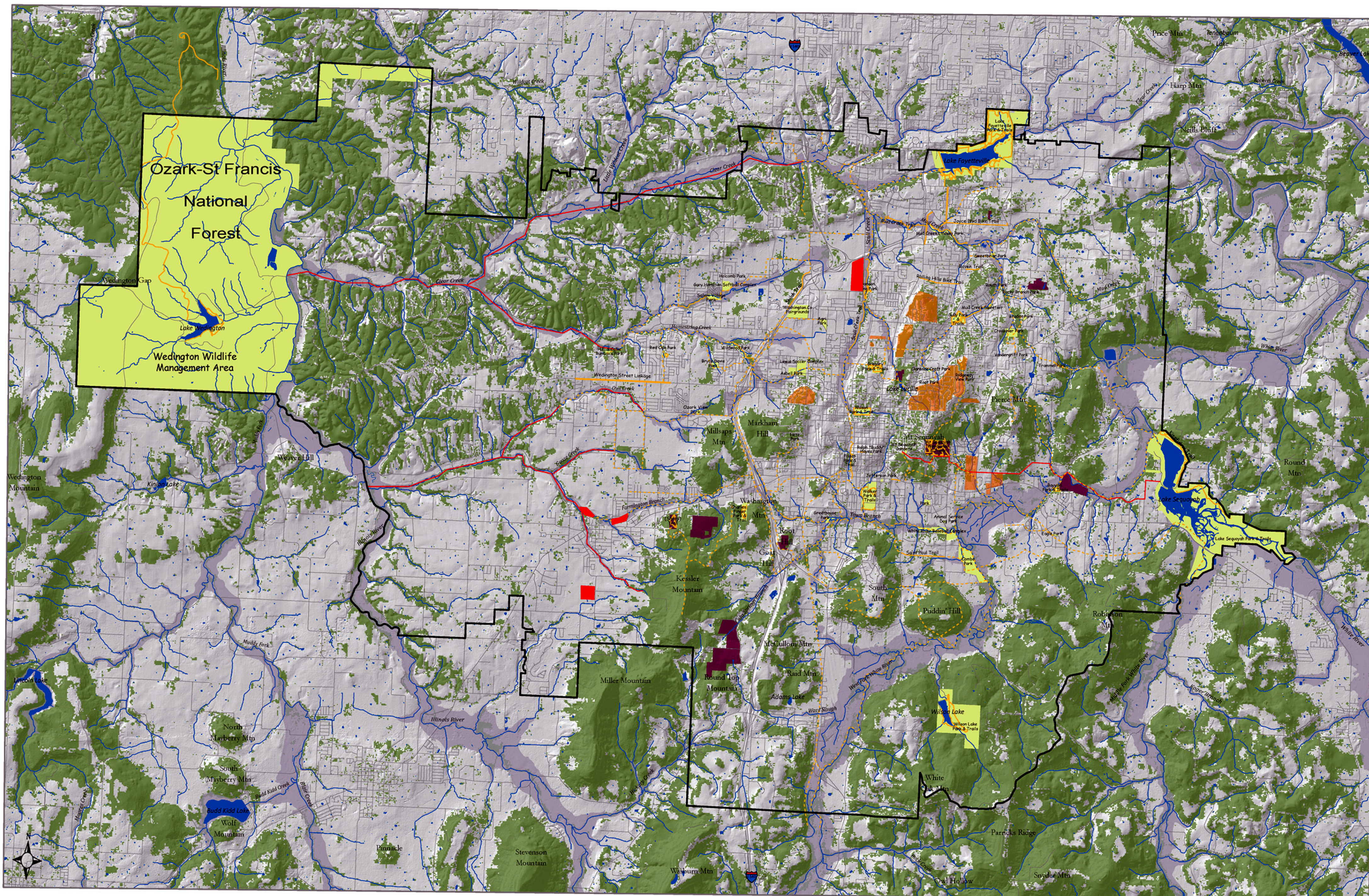


# Green Infrastructure Planning - Linking Arkansas Communities 2008-2009

## Parks & Trails Working Group Map



### Legend

- Existing Parks
- Working Group Suggested Parks
- Established Trails
- Proposed Trails
- Working Group Suggested Trails
- Areas of Conservation Interest
- Conservation Easement Properties
- Roads
- Streams
- Floodplains
- Fayetteville Neighborhood Associations'

Sources: ((format) name: acquired from, published date, file name, alterations to original) Base map: GeoStor, 20070101, ELEV.HILLSHADE\_STATEWIDE\_2006, clipped to local area; Existing Parks: GeoStor, 20070508, CADAS\_PUBLIC\_LAND\_BOUNDARIES\_AHTD\_poly, file intersected with: Existing Parks: City of Fayetteville, 200809, Existing\_parks; Working Group Suggested Parks: GIP PWG, 20090217, digitized from working map; Established Trails: for Fayetteville: City of Fayetteville, 200809; for Johnson: City of Johnson, 2008, digitized from Parks & Trails Master Plan, for Ozark-St Francis National Forest: GeoStor, 20061023, TRANSP.OZARKNFS\_TRAILS\_NFS, clipped to local area; Proposed Trails: City of Fayetteville, 200809, future trails; Working Group Suggested Trails: GIP PWG, 20090217, digitized from working map; Forests: GeoStor, 20070320, IMAGE.LULC\_FALL\_CAST\_2006.tif, clipped to local area, forest coverage (class 100) extracted; Study Area boundary: Developed by FNHA & BWD to include planning areas of Fayetteville, Farmington, Johnson, Greenland, and ONFS Wedington Wildlife Management Area, 200905; Streams: GeoStor, unspecified, WATER.NHD\_HIGH\_RES\_FLOWLINE\_USGS, clipped to local area; Waterbodies: GeoStor, unknown WATER.NHD\_HIGH\_RES\_WATERBODY\_USGS, clipped to local area; Floodplains: Washington Co. Planning, 20080531, S\_FLD\_HAZ\_AR.shp, clipped to local area; Fayetteville Neighborhood Associations' Areas of Conservation Interest: GIP PWG, 20090217, Neighborhood Association survey results digitized from working map; Conservation Easement Properties: City of Fayetteville, 200810, conservation\_lands; Roads: GeoStor, 2006, transportation\_AHTD\_roads; Landform names: GeoStor, 2005, culture\_landforms\_GNIS\_USGS\_point, Streams: GeoStor, 2006, Water\_NHD\_High\_Res\_Flowline\_USGS\_linez.

Green Infrastructure Planning - Linking Arkansas Communities 2008-2009 is a grant project of Fayetteville Natural Heritage Association in cooperation with the Beaver Water District to develop a regional strategic conservation plan funded by the United States Forest Service through the Arkansas Forestry Commission's Urban Forestry Program. Cartography and GIS work by Barbara Elaine Boland February 26, 2009

