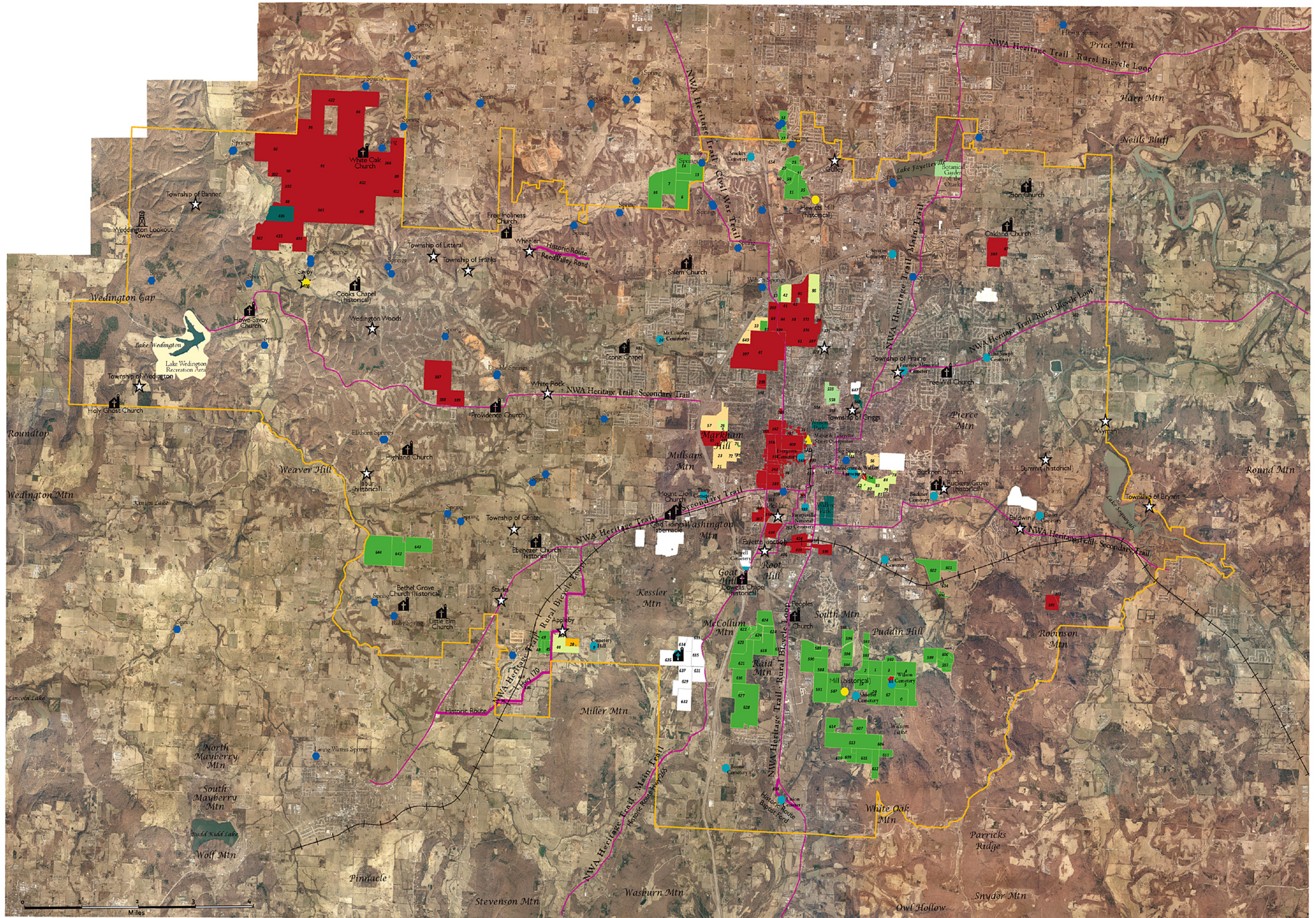


Green Infrastructure Planning - Linking Arkansas Communities 2008-2009

Heritage Working Group Map



- Historic Routes
- NWA Heritage Trails Plan Routes
- +— Historic Railroads
- ▲ Historic Bridges
- Camps & Recreation areas
- Springs
- Farms - working family farms
- Farm Remnants - urban open space remnants
- Historic Parks
- Conservation Easements
- Gardens
- University of Arkansas properties
- National Register Building sites
- ★ Historic Settlements & Communities
- ✠ Historic Churches
- Cemeteries
- Mills
- # Database line number for parcel info

Sources: The Washington County parcel ownership database was used to provide polygons for most of the feature classes researched by the HWG including: Camps & Recreation areas, Springs, Farms, Farm Remnants, Historic Parks, Gardens, University of Arkansas properties, National Register Building sites, Historic Churches, Cemeteries, and Mills; the database line number is shown for most parcels. Historic Routes were digitized by Greg Mitchell in consultation with the EWG. Other data used: ((format) name, acquired from, published date, file name, alterations to original) Base map: CAST, 2008, ARWASH08_131INCH, aerial photography mosaic; Study Area boundary: Developed by FNHA & BWD to include planning areas of Fayetteville, Farmington, Johnson, Greenland, and ONFS Wedington Recreation Area, 200905; NWA Heritage Trails Master Plan, 20061102; Heritage_trail_plan_110206_200, clipped to local area; Historic Railroads digitized from 1908 Atlas by John Goddard; Historic Bridges digitized by Barbara Boland; Wedington Recreation Area & other Historic Parks: GeoStor, 20070508, extracted from CADAS_PUBLIC LAND_BOUNDARIES_AHTD_poly; Conservation Easement Properties: City of Fayetteville, 200830; conservation_land; Landform names: GeoStor, 2005; culture_landforms_GNIS_USGS_point; Historic Settlements & Communities, Historic Churches, Cemeteries, & Mills: extracted from GeoStor, 20060829; Cultu_GNIS_All_point; Springs: NWA_Springs, 20090225; digitized from IMAGE_DGR_24K_USGS; additional coordinates and field verification provided by Duane & Judy Woljjen.

Green Infrastructure Planning - Linking Arkansas Communities 2008-2009 is a grant project of Fayetteville Natural Heritage Association in cooperation with the Beaver Water District to develop a regional strategic conservation plan funded by the United States Forest Service through the Arkansas Forestry Commission's Urban Forestry Program. Cartography and GIS work by Barbara Elaine Boland February 16, 2009