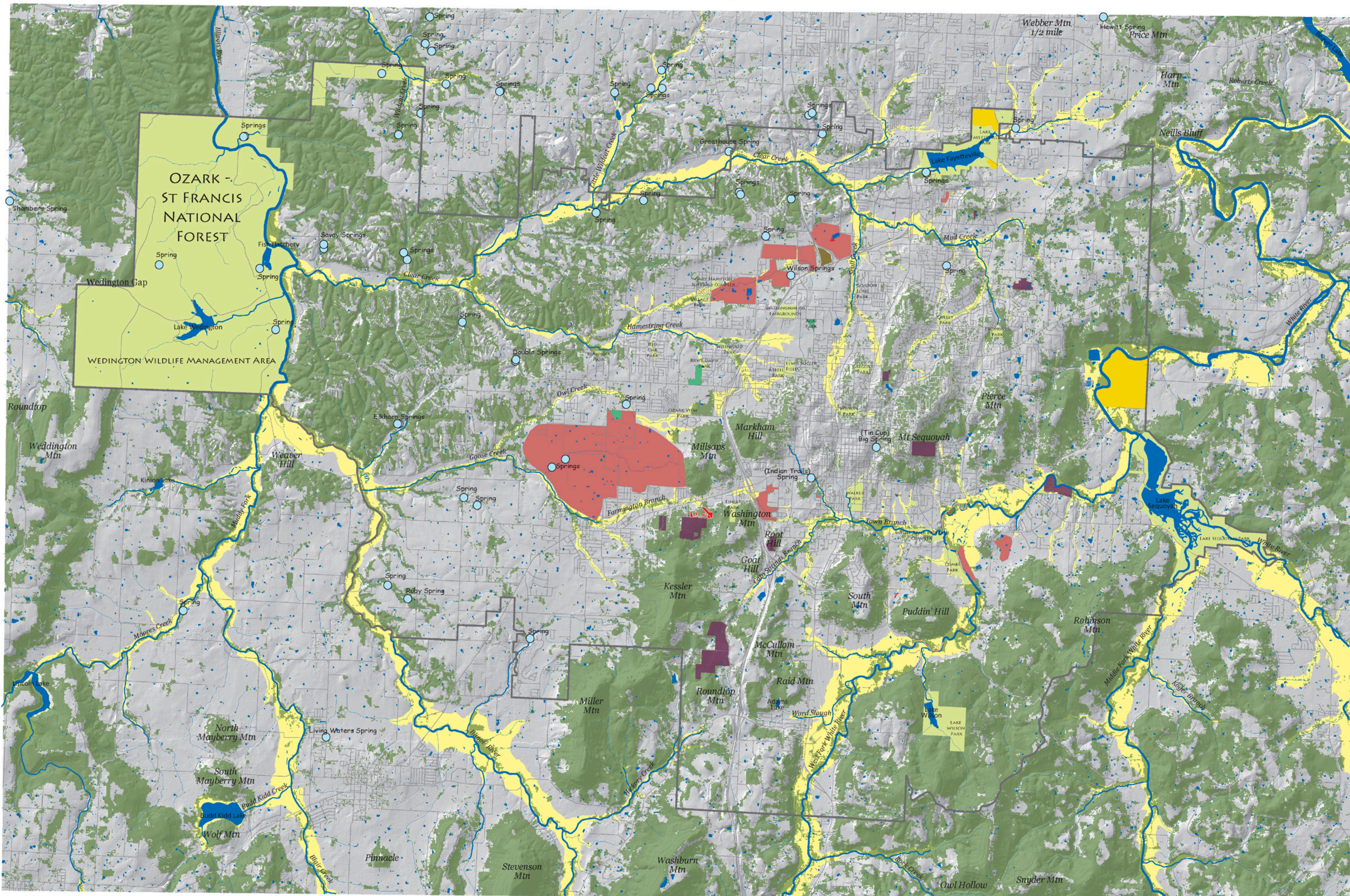


# Green Infrastructure Planning - Linking Arkansas Communities 2008-2009

## Environmental Working Group Map



- Existing Parks
  - Upland Forests - Greenbelts
  - Floodplains
  - Study Area boundary
  - Roads
  - Conservation Easements
  - Springs
  - Waterbodies
  - Streams by stream order
    - 1st order
    - 2nd order
    - 3rd order
    - 4th order
    - 5th order
- 
- Prairie Remnant/Grassland & Wetland classes
  - ACOE Freshwater Emergent Wetlands and Mitigation sites
  - EWG Wet Prairie
  - EWG Seasonal Wetlands
  - ACOE Freshwater Forested/Shrub Wetlands
  - EWG Perennial Forested Wetlands
  - EWG Upland Prairie (former)
  - ACOE Riverine Wetlands
  - EWG Oak Barrens
- (ACOE = Army Corps of Engineers)  
(EWG = Green Infrastructure Planning - Environmental Working Group)

Sources: (format: name: acquired from, published date, file name, alterations to original) Base map: GeoStar, 20070101, ELEV\_HILLSHADE\_STATEWIDE\_2006, clipped to local area; Existing Parks: GeoStar, 20070508, CADAS\_PUBLIC\_LAND\_BOUNDARIES\_AHTD\_poly, file intersected with: Existing Parks; City of Fayetteville, 200809, Existing\_parks; Upland Forests - Greenbelts: GeoStar, 20070310, IMAGE\_LULC\_FALL\_CAST\_2006.tif, clipped to local area, forest coverage (class 100) extracted; Floodplains: Washington Co. Planning, 20080531, S\_FLD\_HAZ\_AR.shp, clipped to local area; Study Area boundary: Developed by FNHA & BWD to include planning areas of Fayetteville, Farmington, Johnson, Greenland, and ONFS Wedington Wildlife Management Area, 200905; Roads: GeoStar, 2006, transportation\_AHTD\_roads, clipped to local area; Conservation Easements: City of Fayetteville, 200810, conservation\_land; Springs: NWA\_Springs, 20090215, Digitized from visual inspection of IMAGE.DRG\_24\_K\_USGS, additional coordinates and field checking provided by Duane & Judy Woljny; Waterbodies: GeoStar, unknown, WATER\_NHD\_HIGH\_RES\_WATERBODY\_USGS, clipped to local area; Streams: GeoStar, 20080430, WATER\_STREAM\_ORDER\_ADEO\_linez, clipped to local area; Landform names: GeoStar, 2005, culture\_lanforms\_GNIS\_USGS\_point, clipped to local area; Prairie Remnant/Grassland & Wetland Classes: ACOE Freshwater Emergent Wetlands & Mitigation sites, ACOE Freshwater Forested/Shrub Wetlands, and ACOE Riverine Wetlands: ACOE, 198004-198505, Lower\_48\_Wetland\_polygons (Fayetteville quadrange only available digitally); EWG Wet Prairie, EWG Seasonal Wetlands, EWG Perennial Forested Wetlands, EWG Upland Prairie (former) and EWG Oak Barrens: 200902, digitized from consultation with GIP EWG and from the EWG working map.

Green Infrastructure Planning - Linking Arkansas Communities 2008-2009 is a grant project of Fayetteville Natural Heritage Association in cooperation with the Beaver Water District to develop a regional strategic conservation plan funded by the United States Forest Service through the Arkansas Forestry Commission's Urban Forestry Program. Cartography and GIS work by Barbara Elaine Boland February 26, 2009