

Appendix 9 – Design Team Packet

Part b - Project Study Area Map Description

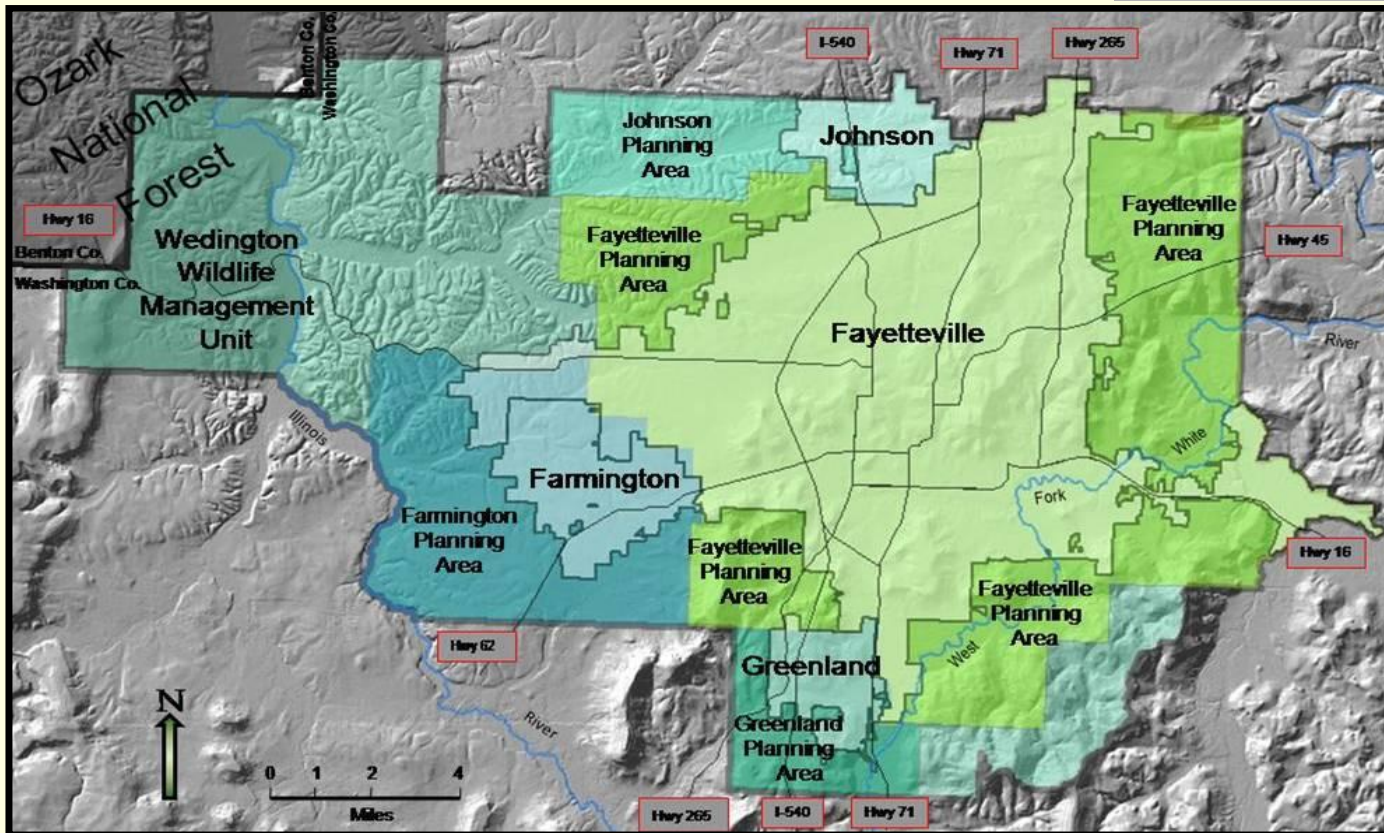
The study area for was ultimately defined as a simple box 1500m (4921 ft) outside an original irregular area that was developed from a combination of natural and manmade boundaries. City limits and city planning boundaries of Fayetteville, Farmington, Greenland, and Johnson (May, 2008) form the core of an area which was extended on the SE to the boundary of the watershed of the West Fork of the White River using National Resource Conservation Service 2006 Hydrologic Unit Code 12 water basin data. The Illinois River forms part of the boundary on the southwest and the line file was extracted from the National Hydrologic Dataset dated February 2006. The boundary of the Ozark National Forest Wedington Wildlife Management Unit was taken from Cadastral Public Land Boundaries file, dated May 2007, from the Arkansas State Highway & Transportation Department. All features were confined to the extent of Washington County; the county line file was obtained from the Washington County Assessor's Office, May 2008.

Boundary: TOP: 676992.595342
LEFT: 593482.157256 RIGHT: 720548.657256
BOTTOM: 595741.095342

Projected Coordinate System: NAD_1983_StatePlane_Arkansas_North_FIPS_0301
Projection: Lambert Conformal Conic
False Easting: 1312333.33333333
False Northing: 0.00000000
Central Meridian: -92.00000000
Standard Parallel 1: 34.93333333
Standard Parallel 2: 36.23333333
Latitude of Origin: 34.33333333
Linear Unit: Feet US

Geographic Coordinate System: D North American 1983
Datum: North American Datum 1983
Prime Meridian: Greenwich
Angular Unit: Degree

Project Summary: Study Area



Fayetteville Natural Heritage Association, Barbara Elaine Boland, August 2008

172 mi² (445 km²) area encompassing City Limits and Planning Areas of Farmington, Greenland, Johnson, & Fayetteville and the Ozark National Forest, Wedington Wildlife Management Unit with adjacent unincorporated areas of Washington County.

Appendix 9 - Design Team Packet
Part c - Project Timeline and Deliverables

Phase I Training, Organization, Gathering Participants

April 2008 – September 2008

Training: Karen Rollet-Crocker and Barbara Boland took Green Infrastructure training at USFWS National Conservation Training Center, Shepherdstown, WV, April 14-18, 2008

Organization: Develop organization for personnel, work flow, and milestones

1. This chart started July 2008 and under continuing update
2. Delineate personnel groups and teams

Phase I	August 2008
Phase II	September 1, 2008
Phase III	
Phase IV	

Gathering Support & Participants

1. Present to Mayors/Judge/ Planning Commissions of each jurisdiction and others to gain support

Mayor of Fayetteville – Dan Coody	6/5/2008
Mayor of Greenland – John Gray	6/5/2008
City of Johnson Trails Commission	6/9/2008
Mayor of Johnson – Lonnie Barrett	6/12/2008
Washington County Judge – Jerry Hunton	6/12/2008
City of Farmington Planning Commission	6/12/2008
City of Fayetteville Council of Neighborhoods	6/17/2008
NW Arkansas Regional Planning Commission	7/30/2008
Washington County Planning Department	7/31/2008
Fayetteville Chamber of Commerce	8/18/2008
University of Arkansas Sustainability Council	8/26/2008

2. Develop list of potential stakeholders by July 26, 2008
3. Invite Stakeholders to meeting by July 26, 2008 300+ invited
4. Hold Stakeholder meeting August 21, 2008 ~115 attended
5. Enlist Design Team members ~60 volunteered

Phase II Development Network Maps – Working Group and Public provide input for network maps October 2008 – January 2009

Resource Team (RT) Activity

Divide up Design Team into Working Groups (WGs)

Awareness Working Group (AWG)

Community Representatives Working Group (CWG)

Environmental Working Group (EWG)

Heritage Working Group (HWG)

Landuse Working Group (LWG)

Parks & Trails Working Group (PWG)

Formulate Leadership Group (LG) as interface between Resource Team and Working Groups consists of:

Entire RT, entire CWG, 1 representative (Chair person or Vice-Chairperson) and 1 scribe from each WG

Leadership Group meets as needed to guide process

Present to USDA Forest Service Mid-Term check (last week in January)

Working Group Activity

Organization

1. Select Chairperson & Vice-Chairperson to report to and participate in Leadership Group
2. Select a scribe(s) to be present at all WG & LG meetings to record & submit record of activities
3. Schedule next meeting & inform Resource Team
4. Determine information needed

Assignments

1. EWG, HWG, LWG, & PWG develop a GIP Network Map
2. EWG, HWG, LWG, & PWG document contents of GIP Network Map
3. EWG, HWG, LWG, & PWG produce a compendium of implementation strategies
4. EWG, HWG, LWG, & PWG provide AWG with topics for education/outreach
5. AWG respond to WGs suggestions for education/outreach
6. AWG develop & implement strategy for public information/education
7. AWG develop, keep, and publicize public forum calendar
8. AWG report on GIP progress
9. CWG develop list of community residents to inform
10. CWG develop strategy for contacting general public in respective communities

Public Forums

Schedule meetings

- Farmington
- Greenland
- Johnson
- Fayetteville
- Wedington area
- University of Arkansas
- Develop facilitation teams
- Get Public input
 1. GIP Network Map
 2. Prioritization for mapped WG GIP elements

Phase III	Map Integration Integrate public, WG, and base maps into one Green Infrastructure Network Map Integrate WG activity reports	February 2009 – March 2009										
Phase IV	Presentation Present to Study Area jurisdictions for adoption <ul style="list-style-type: none"> City of Farmington City of Greenland City of Johnson City of Fayetteville Washington County University of Arkansas: Main Campus and Agricultural Division Present to municipalities/counties within MSA and surrounding communities within Illinois River & Beaver Lake watersheds <table border="0" style="width: 100%;"> <tr> <td>City of West Fork</td> <td>City of Bentonville</td> </tr> <tr> <td>City of Tontitown</td> <td>City of Rogers</td> </tr> <tr> <td>City of Goshen</td> <td>City of Siloam Springs</td> </tr> <tr> <td>City of Elkins</td> <td>City of Prairie Grove</td> </tr> <tr> <td>City of Springdale</td> <td>Benton County</td> </tr> </table>	City of West Fork	City of Bentonville	City of Tontitown	City of Rogers	City of Goshen	City of Siloam Springs	City of Elkins	City of Prairie Grove	City of Springdale	Benton County	April 2009 – November 2009
City of West Fork	City of Bentonville											
City of Tontitown	City of Rogers											
City of Goshen	City of Siloam Springs											
City of Elkins	City of Prairie Grove											
City of Springdale	Benton County											

Organization of People working on Project

